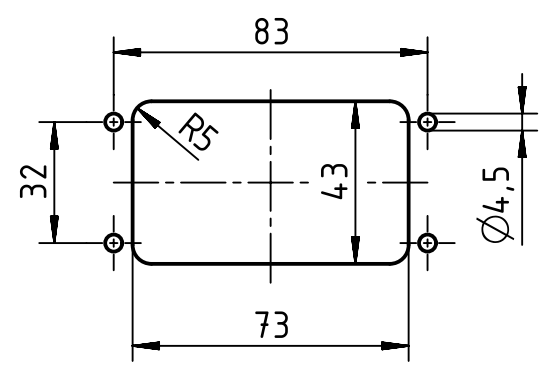



panel cut out (1:2)



	All Dimensions in mm Original Size DIN A4		Scale 1:1	Free size tol.		Ref.	
	All rights reserved Department EL PD		Created by WENE	Inspected by LUOK	Standardisation RUETERA	Date 2020-05-22	State Final Release
HARTING Electric GmbH & Co. KG D-32339 Espelkamp			Title Han 10B HBM Rear-Fit SL			Doc-Key / ECM-Nr. 100825396/UGD/001/C 500000173246	
			Type TB	Number 09 30 010 0397		Rev. C	Page 1/1