

## Product Declaration Certificate

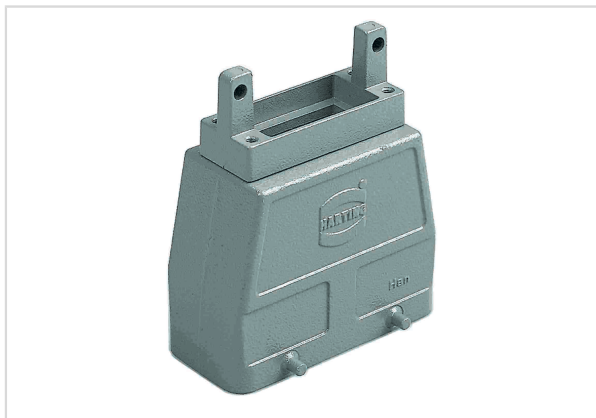


Image is for illustration purposes only. Please refer to product description.

Part number	09 30 016 4411
Specification	Han 16B-HTE

RoHS	compliant
------	-----------

ELV status	compliant
------------	-----------

China RoHS	
------------	--

REACH Annex XVII substances	Not contained
-----------------------------	---------------

REACH ANNEX XIV substances	Not contained
----------------------------	---------------

REACH SVHC substances	Not contained
-----------------------	---------------

California Proposition 65 substances	Yes
--------------------------------------	-----

RoHS: Directive 2011/65/EU with all amending directives and regulations in force at the declaration's creation date.

ELV status: Directive 2000/53/EC with all amending directives and regulations in force at the declaration's creation date.

REACH ANNEX: Regulation (EU) No. 1907/2006 with all amending directives and regulations in force at the declaration's creation date.

REACH SVHC substances: We applied "Candidate List of substances of very high concern for Authorisation" of ECHA valid on the declaration's creation date.

ECHA SCIP: Article notification number in the SCIP Data base of the European Chemicals Agency (ECHA) according to Waste Frame Directive 2008/89/EC with amended directive 2018/851 in Article 9